

U

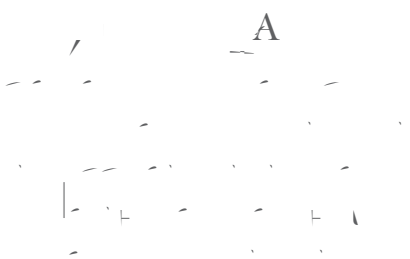
ITY

*as* *aha*  
CHRISTCHURCH NEW ZEALAND

*Front cover te reo translation:* Pāo means 'to dawn', reflecting that the students coming to UC from their secondary schools are at the dawn of their tertiary education journey.

*Front cover image: is a simplified version of Haehae moana or braided rivers design. Haehae moana are representative of our unique natural environment here in the Waitaha region and symbolise the importance of mahinga kai, sustainable food and natural resource gathering practises, of the iwi Ngāi Tahu. The haehae lines used here were traditionally used in whakairo and tell of whakapapa and pūrākau – traditions, histories and stories. Haehae means to etch, cut, carve. Whakarare means to turn or fall and are represented in this design where the haehae lines cross over themselves.*

Information is correct as at Oketopa October 2023, but is subject to change.



Students can choose from a wide range of courses and experience what it's like to study at university. It's a chance to get a head start on tertiary studies, investigate a potential study pathway or subject of interest, and meet with other like-minded secondary school students. Completed STAR courses can normally be credited towards a degree at UC or another New Zealand university.

### Who can enrol?

The P ao | STAR programme is intended for students in Year 12 or 13 who have met the literacy and numeracy requirements of NCEA University Entrance (or equivalent).

This includes international students studying at a New Zealand secondary school and home-schooled students.

### What does a P ao | STAR course involve?

The majority of distance courses listed in this brochure are regular first-year university courses suitable for P ao | STAR students.

Some courses (MATH199 and ECON199 ) are exclusively for P ao | STAR students. These courses cover the same content as their non-STAR equivalents.

Most P ao | STAR courses are 15 points and run over one semester (4 months). Each 15 point course has a workload of around 8 hours a week, including time spent watching lectures, reading the online course materials, working on assignments, and preparing for an exam.

Detailed course information is available online at [www.canterbury.ac.nz/star](http://www.canterbury.ac.nz/star)

### How to apply

- Fill out the STAR Consent Form (available online at [www.canterbury.ac.nz/star](http://www.canterbury.ac.nz/star)) and get it signed by your parent/caregiver and

# 2024 Akoranga tawhiti Distance courses

	Course Code	Course	Points	Semester		Course Fee for STAR Students
Anthropology	ANTH108	Witchcraft, Magic and the Dead	15	S1	-	\$597
Astronomy	ASTR109	The Cosmos: Birth and Evolution	15	S1	-	\$597
Education	CHCH101	Strengthening Communities through Social Innovation	15	S1	-	\$597
Chinese	CHIN151	Chinese Language 1-A	15	S1	-	\$597
	CHIN152	Chinese Language 1-B Students should complete CHIN151 or a placement test first.	15	-	S2	\$597
	CHIN251	Chinese Language 2-A Students should complete CHIN152 or a placement test first.	15	S1	-	\$597
	CHIN252	Chinese Language 2-B Students should complete CHIN251 or a placement test first.	15	-	S2	\$597
Classics	CLAS120	People, Places and Histories of the Graeco-Roman World	15	S1	-	\$597
	CLAS122	Myth, Power and Identity in the Graeco-Roman World	15	-	S2	\$597
	CLAS145	Beginners' Latin Students should complete CLAS151 or equivalent preparation approved by the Head of School or nominee first.	15	-	S2	\$597
	CLAS151	Greek and Latin for Absolute Beginners	15	S1	-	\$597
Media and Communication	COMS101	Media and Society	15	S1	-	\$597
	COMS102	Introduction to News and Journalism	15	-	S2	\$597
	COMS104	Introduction to Strategic Communication	15	-	S2	\$597
Criminal Justice	CRJU101	Introduction to Criminal Justice	15	S1	-	\$597
Economics	ECON199	Introduction to Microeconomics Students who have completed ECON104 should not enrol in this course. Course starts 19 February and ends 24 November.	15	X (Whole year)		\$597
Education	EDUC101	Spark! The Art & Science of Learning	15	-	S2	\$597
	EDUC102	Child and Adolescent Development	15	-	S2	\$597
	EDUC103	Education, Culture and Society	15	S1	-	\$597
European and EU Studies	EURA101	Global Europe	15	S1	-	\$597
German	GRMN151	Elementary German Language A	15	S1	-	\$597
	GRMN152	Elementary German Language B Students should have completed GRMN151 first or 20 credits German at NCEA Level 2 or by placement test.	15	-	S2	\$597
Health Sciences	HLTH101	Introduction to Health Studies	15	S1	-	\$597
	HLTH102	Health Promotion	15	-	S2	\$597
	HLTH106	Te Wero – M ori Health Issues and Opportunities	15	S1	-	\$597
Human Services	HSRV103	Violence in Society This course covers some sensitive topics.	15	-	S2	\$597
	HSRV104	Youth Realities This course covers some sensitive topics. Students who have completed SOWK104 should not enrol in this course.	15	S1	-	\$597

S1 = Semester One; S2 = Semester Two; W and X = Whole Year



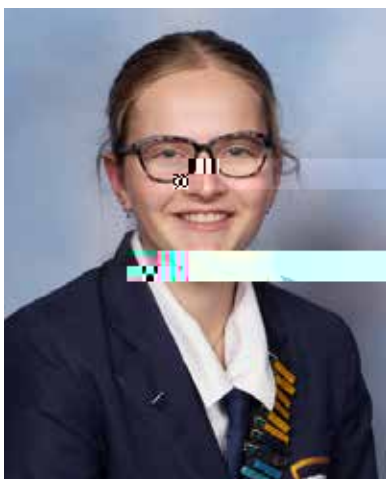


# tahi r m ng kongao UC

## Useful dates for future UC students



Useful dates	
May, June and July	UC Hui Tairanga   Information Evenings by region
August	Applications close for scholarships
September	R T mēne   UC Open Day
	Applications close for accommodation
20 September	Applications close for Bachelor of Music – Performance courses
1 October	Applications to Enrol open
31 October	Applications close for Ako:BTchLn (endorsed in Early Childhood or Primary) – international students
15 November	Applications close for Bachelor of Fine Arts – Intermediate Year (first year)
1 December	Applications close for Ako:BTchLn (endorsed in Early Childhood or Primary) – domestic students



I d c b a d  
 c a d c  
 c c a d d a c b  
 d L T c  
 c d a a da  
 c d e  
 a

**Mia**  
 STAR Student, MATH199  
 Wakatipu High School

UCSTARC  $\mu_{\text{eff}} = \mu_{\text{eff}}^{\text{a}}$

$\mu_{\text{eff}} = \mu_{\text{eff}}^{\text{a}}$

$\mu_{\text{eff}} = \mu_{\text{eff}}^{\text{a}}$

$\mu_{\text{eff}} = \mu_{\text{eff}}^{\text{a}}$

$\mu_{\text{eff}} = \mu_{\text{eff}}^{\text{a}}$